

# MONTHLY MEMBERSHIP PROGRESS REPORT

District 11 B2

Results as of: 4/30/2026

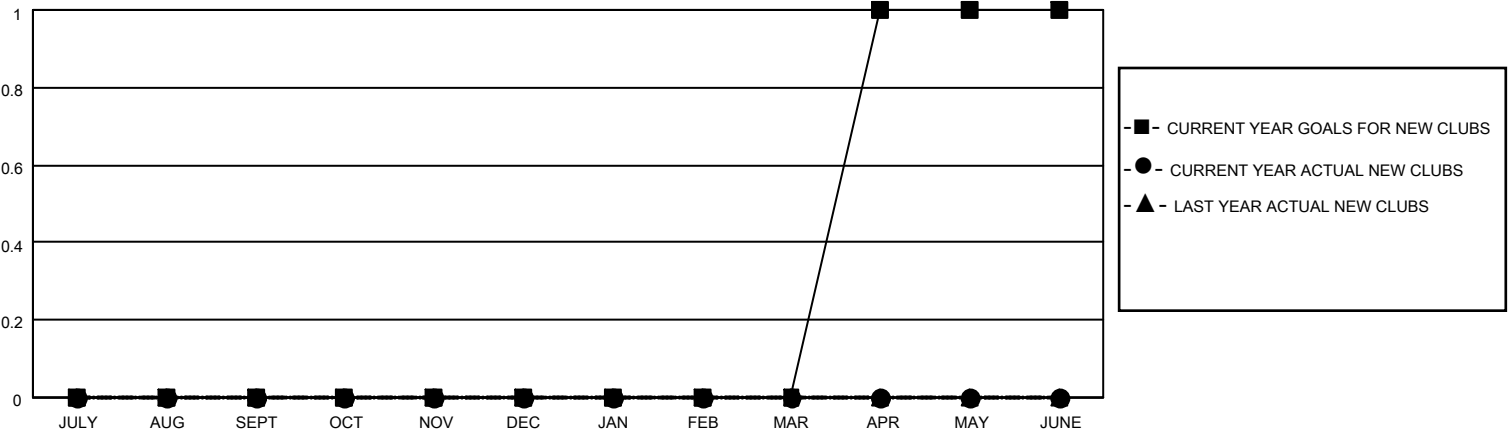
GMT:

LOCATION MICHIGAN

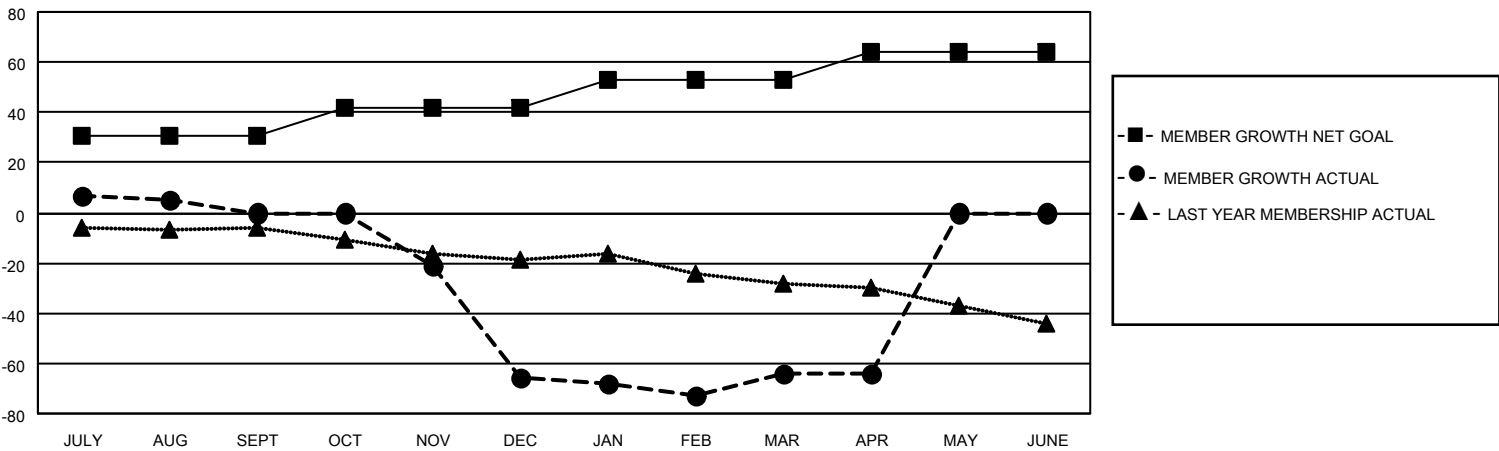
GMT CA

Clubs				Members			
RESULTS FOR 2025-2026				RESULTS FOR 2025-2026			
QUARTER	NEW CLUB GOAL	NEW CLUBS	DROPPED CLUBS	QUARTER	MEMBER GROWTH NET GOAL	MEMBER GROWTH ACTUAL	DROPPED MEMBERS ACTUAL (including transfers)
JULY/AUG/SEPT	0	0	0	JULY/AUG/SEPT	31	18	18
OCT/NOV/DEC	0	0	3	OCT/NOV/DEC	11	18	81
JAN/FEB/MAR	0	0	0	JAN/FEB/MAR	11	15	13
APR/MAY/JUNE	1	0	0	APR/MAY/JUNE	11	2	2

GOALS AND ACTUAL NEW CLUBS CUMULATIVE



GOALS AND ACTUAL MEMBERS CUMULATIVE



DROPPED CLUBS: 3	19 CLUBS OF 31 ADDED 1 OR MORE NEW MEMBERS	<b>GENDER DISTRIBUTION</b>
		MALE 459 (64.20%)
		FEMALE 255 (35.66%)
<b>DROPPED MEMBERS</b>	<a href="#">CLICK HERE FOR CUMULATIVE MEMBERSHIP DATA</a>	TOTAL FAMILY UNIT MEMBERS 161
DECEASED 9		FAMILY MEMBERS PAYING HALF DUES 82
CLUB CANCELLED 21		
OTHER 84		
<b>TOTAL 114</b>		